

Kobelco

**NEW FEATURES
OF SK200-DA(6)
DYNAMIC ACERA**

Kobelco SK200-DA(6)

NEW Design cabin - Exterior Overview



Kobelco SK200-DA(6)

Mark 6 VS Mark 5S - Cabin Exterior Overview

Mark 6



Mark 5S



Kobelco SK200-DA(6)

Mark 6 VS Mark 5S - Cabin Overview

Mark 6



Mark 5S



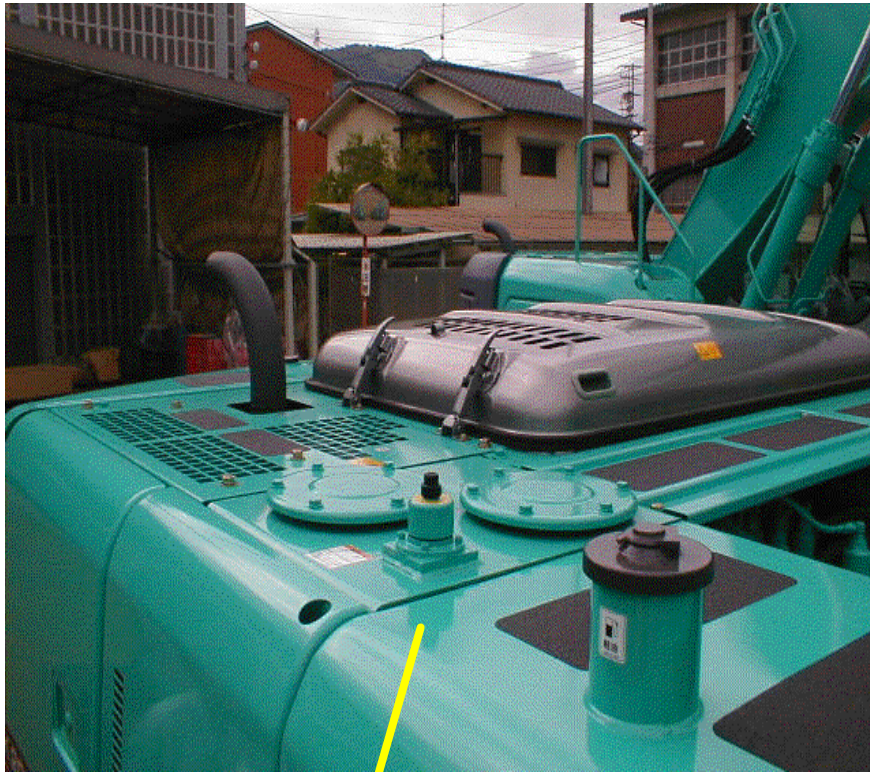
- Operator's cabin has been improved in larger volume and width (approx. 100mm)
- RH rear ventilation windows

Kobelco SK200-DA(6)

NEW DESIGN ENGINE BONNET

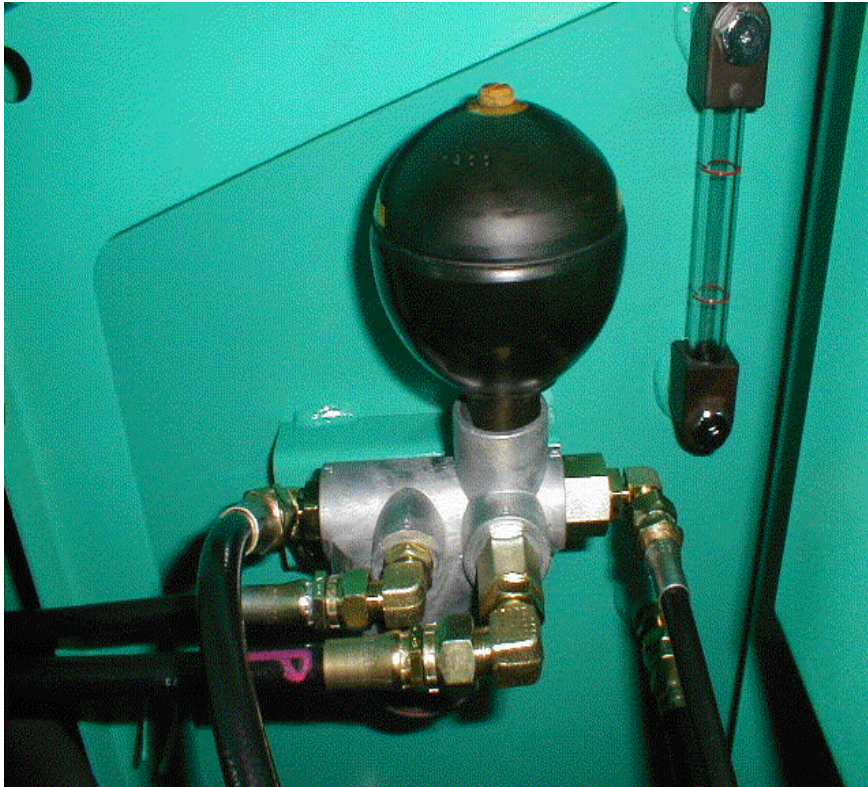
Mark 6

Mark 5S



Improving full flat work area.

Kobelco SK200-DA(6)
NEW TYPE- MARK6 HYDRAULIC TANK
BREATHER



Kobelco SK200-DA(6)

NEW DESIGN - MACHINE BODY



Kobelco SK200-DA(6)

NEW DESIGN BUCKET

Mark 6



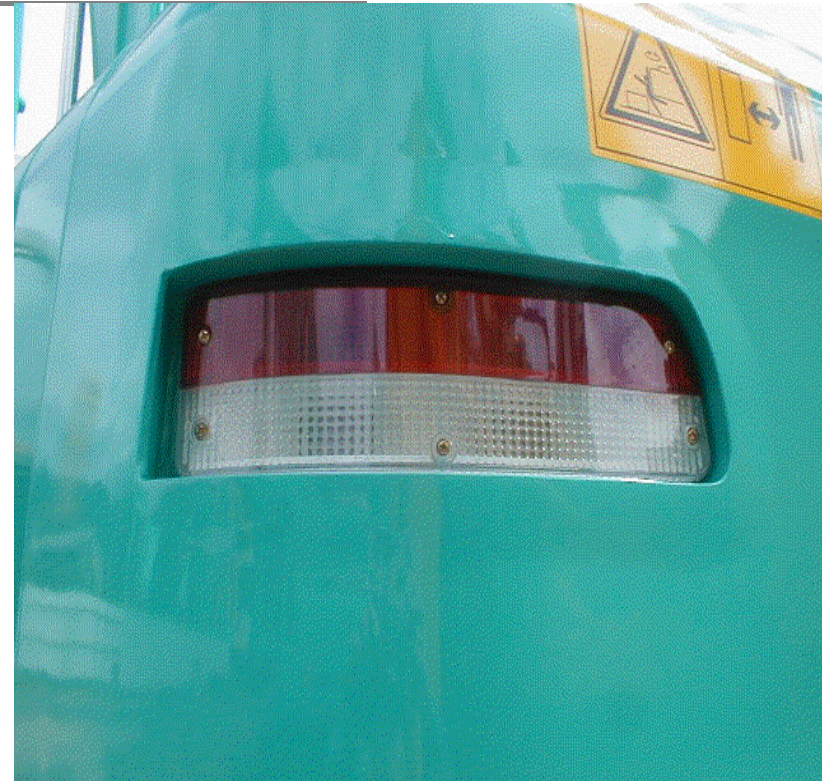
Flat side edge allow maximum digging volume

Mark 5S



Kobelco SK200-DA(6)

NEW DESIGN SWING FLASHER AND **COUNTERWEIGHT**



- Compact and Higher location for less damage even in tight space or in the bush.

Kobelco SK200-DA(6)

NEW DESIGN COUNTERWEIGHT

Mark 6



Mark 5S



Kobelco SK200-DA(6)

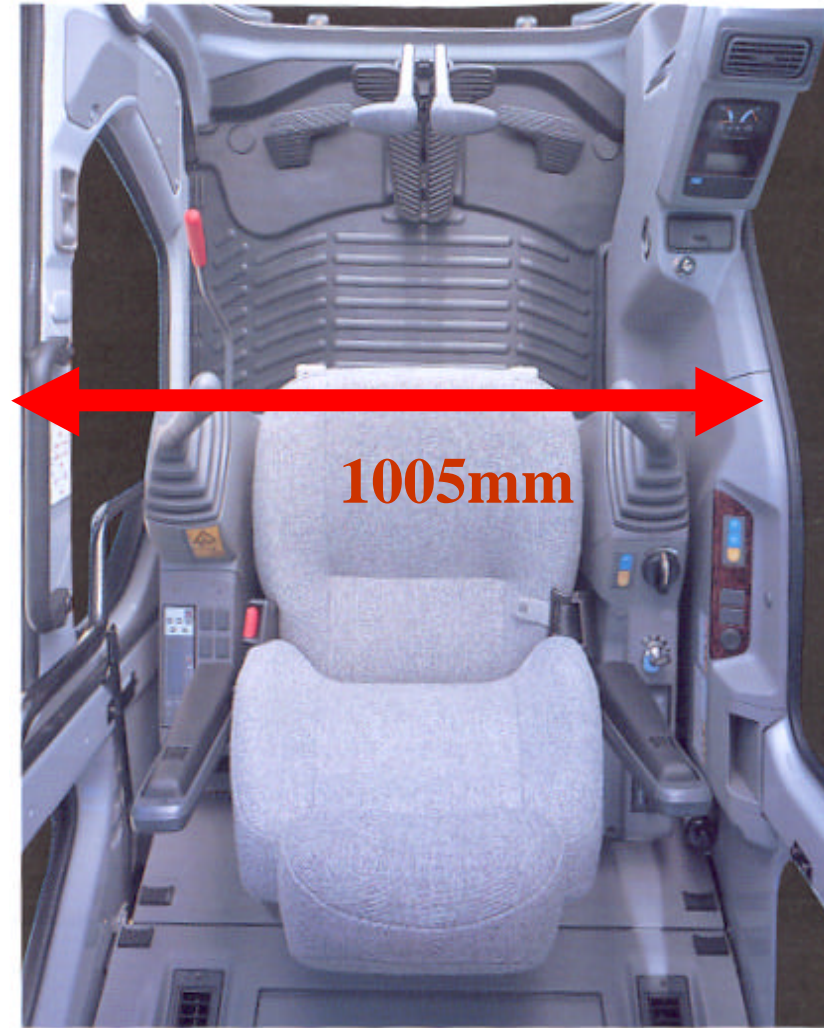
NEW INNER CABIN DESIGN



Approx.
100mm wider
and much
better visibility

Kobelco SK200-6DA

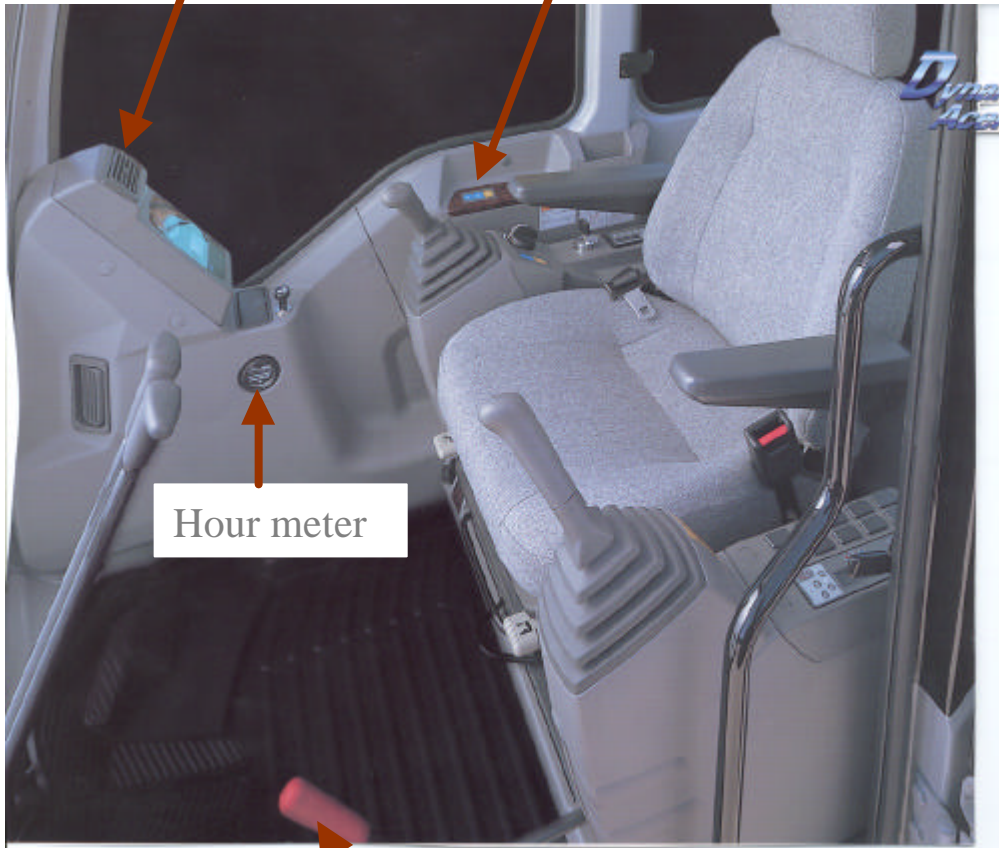
NEW CABIN DESIGN LAYOUT- TOP VIEW



Kobelco SK200-DA(6) **NEW CONTROL PANEL DESIGN**

Air-conditioner
outlet vent.

Right panel switch



Hour meter

Hour meter

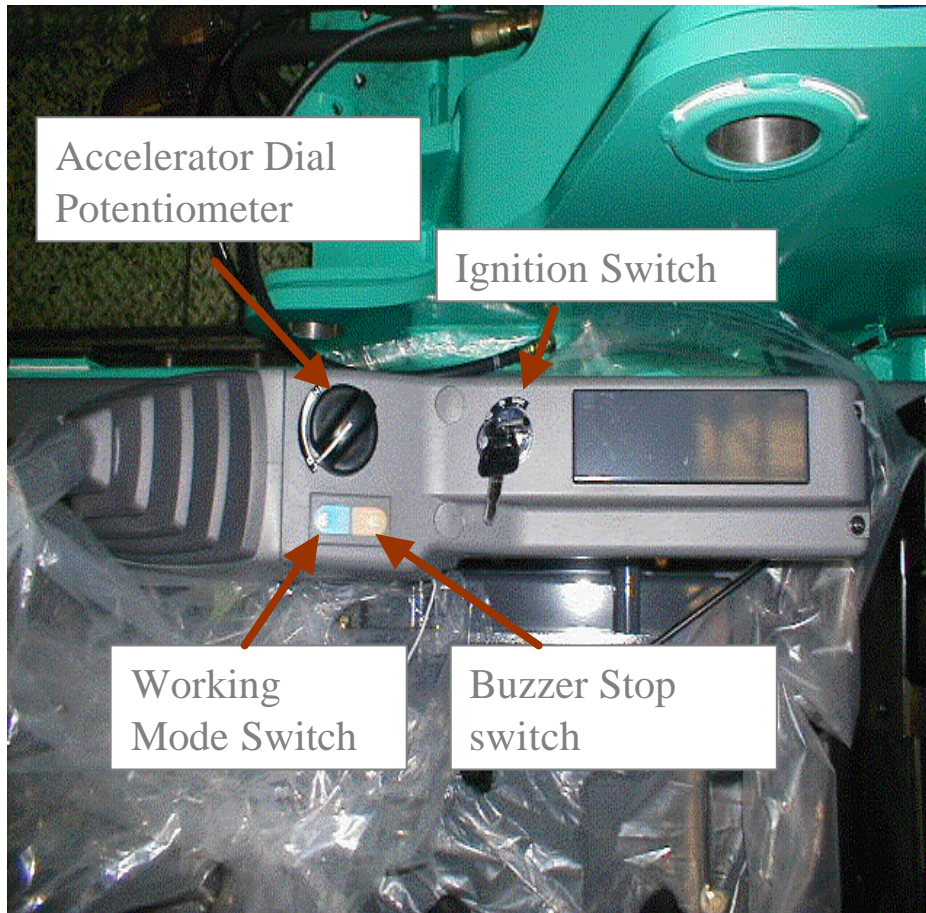


Safety Lever Lock

Kobelco SK200-DA(6)

CONTROL PANEL DESIGN -RH NEW

Right switch panel



Kobelco SK200-DA(6)

NEW CONTROL PANEL DESIGN - LH

Overview



Kobelco SK200-DA(6)

NEW FEATURE - ELEGANT MONITOR DESIGN

Mark 5S



Mark 6



Kobelco SK200-DA(6)

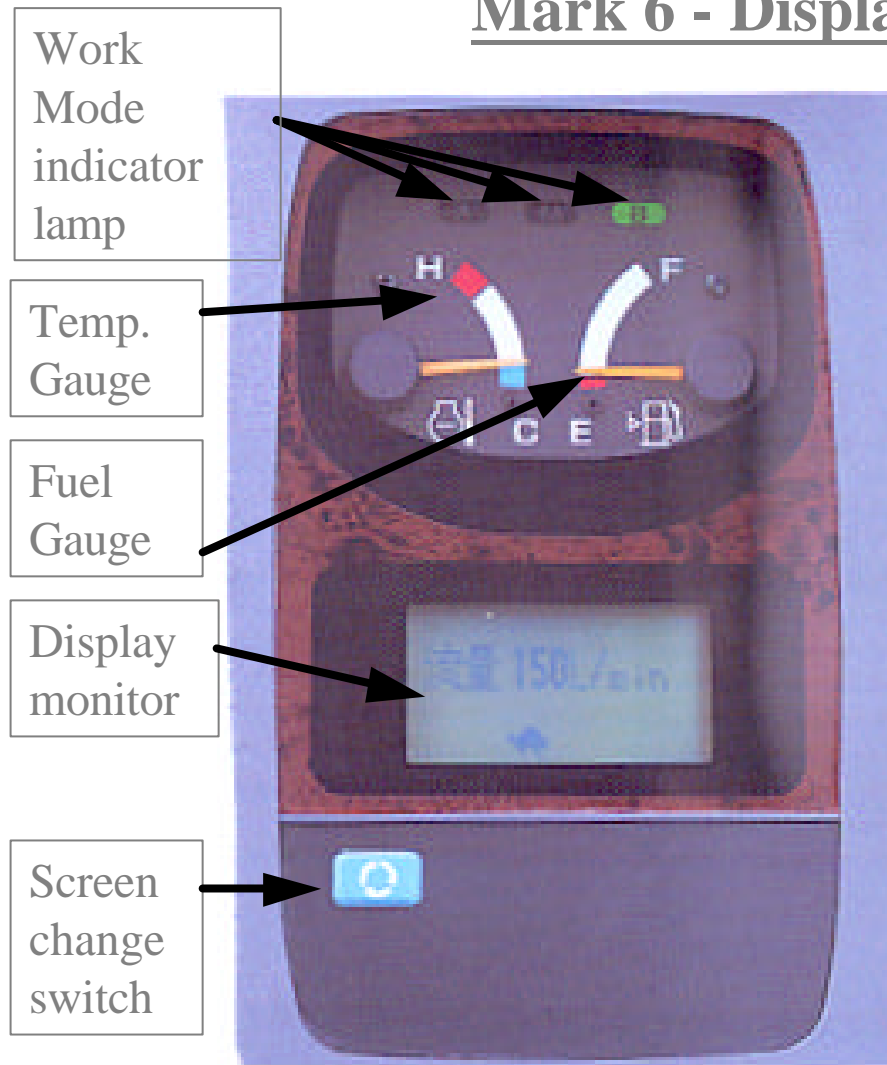
NEW FEATURE - ELEGANT MONITOR DESIGN



- The newly multi-display monitor, attractively installed in a simulated wood frame, provides more information about the machine condition with gauges switched to analog display for quicker, easier reading.
- **Maintenance information display**
- **Self diagnostic function (33 items)**
- **Service diagnostic function (35 items)**

SK200 Dynamic Acera

Mark 6 - Display Panel Overview



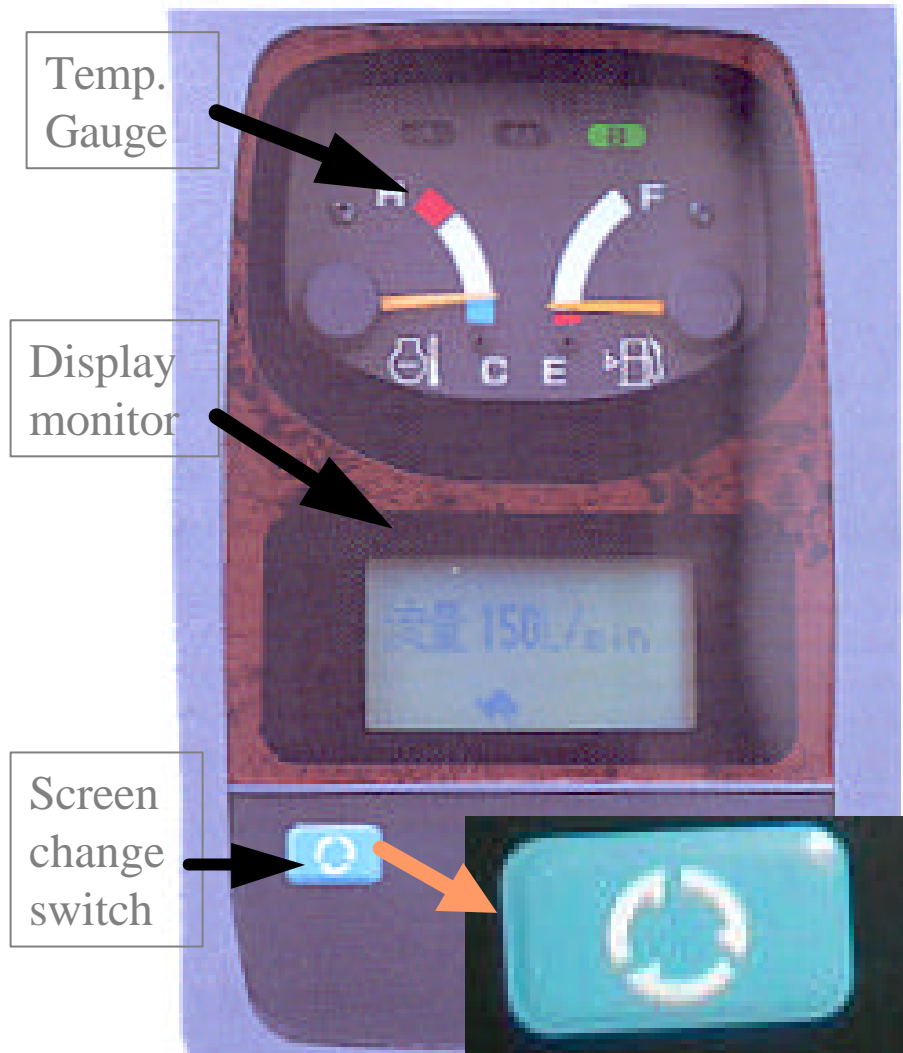
- **Working mode indicator lamp**
- By pressing any work mode selector switches **A**, **M**, **B** on switch panel, the selected work mode the indicator lamp goes on green. After start up of engine, the switch is always set to M mode.

- **Fuel gauge**

| | |
|--------------------|-------------|
| | SK200-DA(6) |
| Full of fuel | 340L |
| E position | 63L |
| Warning lamp light | 54L |

SK200 Dynamic Acera

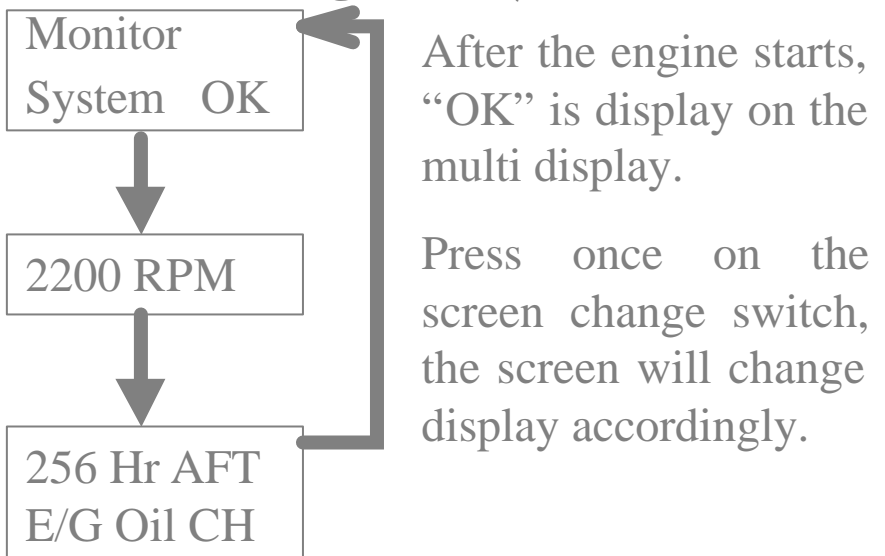
Display Panel Overview



- Temp. gauge

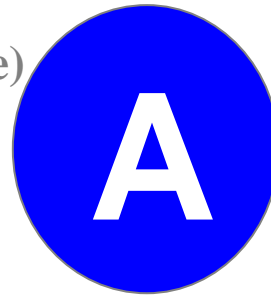
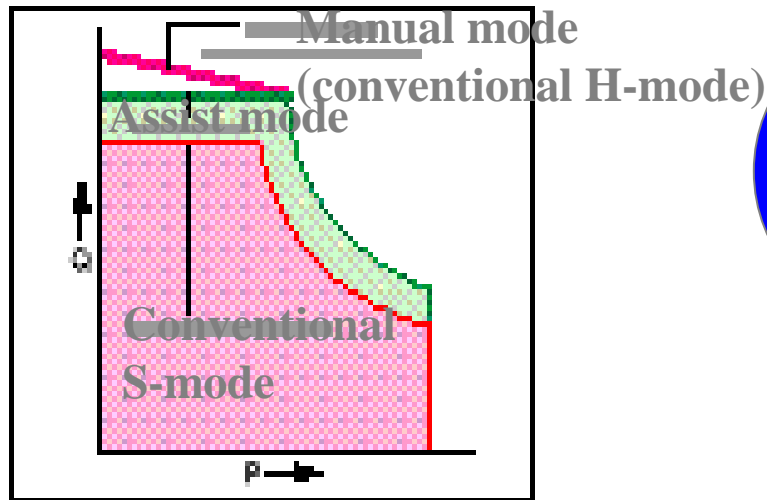
| Pointer position | Temp. Level |
|------------------|-----------------------------|
| (A) | $70 \pm 6^{\circ}\text{C}$ |
| (B) | $105 \pm 5^{\circ}\text{C}$ |
| (C) | $115 \pm 5^{\circ}\text{C}$ |

- Screen change switch



SK200 Dynamic Acera

PQ curve



Assist Mode Features

Matched with electronic governor control, Assist mode maintains the same engine rpm regardless of the workload, and always keeps engine rpm within rated rpm. In these ways Assist mode helps to reduce noise and fuel consumption.

Display sample

