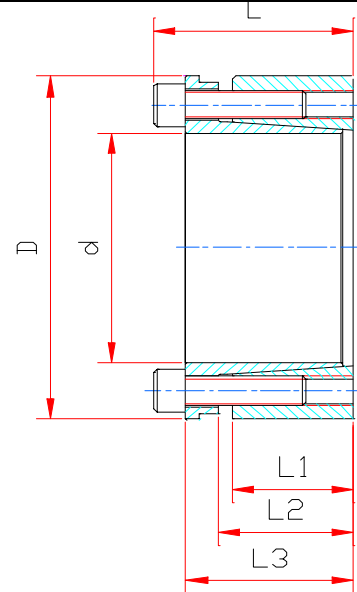


FFR400

THE DIMENSION TO FIX
(SUGGESTION):

SHAFT: h8

HUB: H8



Dimensions						Transmission		Contact Pressure		Locking Screws Din912-12.9		
						Axial Force	Torque	Shaft	Hub	Qty.	Size	Tightening Torque
d	D	L1	L2	L3	L	Ft	Mt	P	P1			
mm	mm	mm	mm	mm	mm	KN	Nm	N/mm ²	N/mm ²			Nm
19	47	26	31	39	45	30.6	353	228	98	6	M6x25	17
20	47	26	31	39	45	33.4	382	226	98	6	M6x25	17
22	47	26	31	39	45	33.4	431	215	93	6	M6x25	17
24	50	26	31	39	45	50.2	519	215	102	6	M6x25	17
25	50	26	31	39	45	50.2	578	225	102	6	M6x25	17
28	55	26	31	39	45	50.2	686	215	107	6	M6x25	17
30	55	26	31	39	45	50.2	745	196	117	6	M6x25	17
32	60	26	31	39	45	66.9	912	225	111	9	M6x25	17
35	60	26	31	39	45	66.9	1010	196	116	9	M6x25	17
38	65	26	31	39	45	66.9	1216	205	121	9	M6x25	17
40	65	26	31	39	45	66.9	1323	196	122	9	M6x25	17
42	75	30	36	47	55	66.9	2128	232	137	6	M8x30	41
45	75	30	36	47	55	92.1	2304	232	137	6	M8x30	41
48	80	30	36	47	55	110	2461	213	132	6	M8x30	41
50	80	30	36	47	55	122.8	2530	213	132	6	M8x30	41
55	85	30	36	47	55	122.8	3138	218	142	9	M8x30	41
60	90	30	36	47	55	122.8	3314	194	153	9	M8x30	41
65	95	30	36	47	55	122.8	4079	208	137	9	M8x30	41
70	110	40	46	57	67	193.5	6707	220	140	8	M10x35	83
75	115	40	46	62	72	193.5	7354	205	135	8	M10x35	83
80	120	40	46	62	72	193.5	7943	196	127	8	M10x35	83
85	125	40	46	62	72	241.9	9512	205	142	10	M10x35	83
90	130	40	46	62	72	241.9	10100	196	135	10	M10x35	83
95	135	40	46	62	72	241.9	11865	205	145	10	M10x35	83
100	145	46	52	77	89	282.8	15396	211	145	8	M12x45	145
110	155	46	52	77	89	282.8	16867	192	136	8	M12x45	145
120	165	46	52	77	89	353.6	22064	211	152	10	M12x45	145
130	180	46	52	77	89	424.3	23535	192	137	12	M12x45	145
140	190	51	59	84	90	448.5	30210	192	142	10	M14x45	230
150	200	51	59	84	90	489	36440	201	150	10	M14x45	230