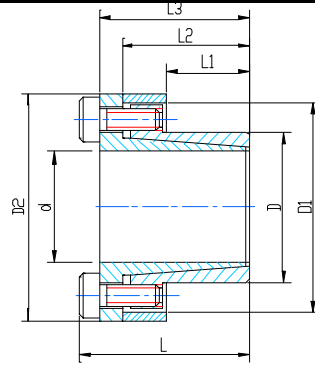


FFR200

THE DIMENSION TO FIX
(SUGGESTION):

SHAFT: h8

HUB: H8



Dimensions								Transmission		Contact Pressure		Locking Screws Din912-12.9		
								Axial Force	Torque	Shaft	Hub	Qty	Size	Tightening Torque
d	D	L1	L2	L3	L	D2	D1	Ft	Mt	P	P1			
mm	mm	mm	mm	mm	mm	mm	mm	KN	Nm	N/mm2	N/mm2			Nm
8	15	12	22	26	30	28	25	7.19	28	115	61	4	M4x12	5.2
9	16	14	23	27	31	32	28	7.19	32	98	54	4	M4x12	5.2
10	16	14	23	27	31	32	28	7.19	35	88	54	4	M4x12	5.2
11	18	14	23	27	31	34	30	7.19	39	80	49	4	M4x12	5.2
12	18	14	23	27	31	34	30	7.19	43	73.5	49	4	M4x12	5.2
14	23	14	23	27	31	39	35	7.19	50	63	37	4	M4x12	5.2
16	24	16	29	36	42	45	40	12.14	97	67	44	3	M6x18	17
18	26	18	31	38	44	47	42	16.1	140	75	51	4	M6x18	17
19	27	18	31	38	44	48	43	16.1	150	71	49	4	M6x18	17
20	28	18	31	38	44	49	44	16.1	160	48	48	4	M6x18	17
22	32	25	38	45	51	54	48	16.1	170	51	35	4	M6x18	17
24	34	25	38	45	51	56	50	16.1	190	46	32	4	M6x18	17
25	34	25	38	45	51	56	50	16.1	200	44	32	4	M6x18	17
28	39	25	38	45	51	61	55	24.27	330	53	38	5	M6x18	17
30	41	25	38	45	51	63	57	24.27	360	50	36	6	M6x18	17
32	43	30	43	50	56	65	59	24.27	380	46	33	6	M6x18	17
35	47	30	43	50	56	69	63	32.36	560	57	42	8	M6x18	17
38	50	30	43	50	56	72	66	32.36	610	52	39	8	M6x18	17
40	53	30	43	50	56	75	69	32.36	640	50	37	9	M6x18	17
42	55	32	45	52	73	77	71	44.55	930	51	38	9	M6x18	17
45	59	32	45	52	58	85	79	59.36	1330	63	48	8	M8x18	42
48	62	40	57	65	58	88	82	59.36	1420	63	49	8	M8x22	42
50	65	45	62	70	78	92	85	74.2	1850	61	47	10	M8x22	42
55	71	50	67	75	83	98	91	74.2	2040	56	42	10	M8x22	42
60	77	50	67	75	83	104	97	74.2	2220	51	39	10	M8x22	42
65	84	50	67	75	83	111	104	74.2	2410	46	35	10	M8x22	42
70	90	60	80	91	101	122	115	104.6	3490	51	39	8	M10x25	84
75	95	60	80	91	101	126	119	104.6	3900	48	37	9	M10x25	84
80	100	65	85	96	106	131	124	125.5	5000	48	38	12	M10x25	84
85	106	65	85	96	106	137	130	125.5	5300	44	35	12	M10x25	84
90	112	65	85	96	106	143	136	125.5	5600	42	32	14	M10x25	84
95	120	65	85	96	106	153	144	146.5	6900	47	37	14	M10x25	84
100	125	65	89	102	114	162	153	205.4	10255	54	43	12	M12x30	145
110	140	80	101	113	125	177	168	239.4	13160	58	31	12	M12x30	145
120	155	90	113	127	139	195	185	307.3	18439	60	45	16	M12x30	230
130	165	90	113	127	139	205	195	307.3	19974	55	43	16	M12x30	230