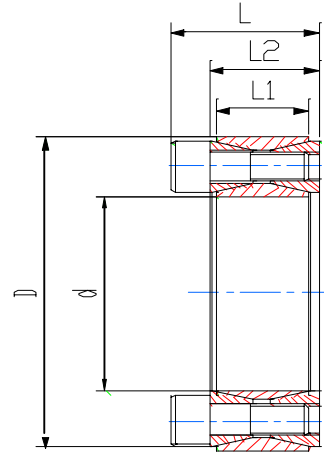


## FFR100

THE DIMENSION TO FIX  
(SUGGESTION):  
SHAFT: h8  
HUB: H8



Dimensions					Transmission		Contact Pressure		Locking Screws Din912-12.9		
					Axial Force	Torque	Shaft	Hub	Qty.	Size	Tightening Torque
d	D	L1	L2	L	Ft	Mt	P	P1			Ts
mm	mm	mm	mm	mm	KN	Nm	N/mm <sup>2</sup>	N/mm <sup>2</sup>	Nm		
19	47	17	20	26	26.8	260	220	93	8	M6x18	15
20	47	17	20	26	26.8	268	220	93	8	M6x18	15
22	47	17	20	26	26.8	283	207	96	8	M6x18	15
24	50	17	20	26	30.1	361	216	103	9	M6x18	15
25	50	17	20	26	30.1	376	206	103	9	M6x18	15
28	55	17	20	26	33.5	420	204	103	10	M6x18	15
30	55	17	20	26	33.5	450	190	103	10	M6x18	15
32	60	17	20	26	40.2	643	214	114	12	M6x18	15
35	60	17	20	26	40.2	703	196	114	12	M6x18	15
38	65	17	20	26	46.9	891	204	122	14	M6x18	15
40	65	17	20	26	46.9	938	200	123	14	M6x18	15
42	75	20	24	32	73.2	1537	252	140	12	M8x22	38
45	75	20	24	32	73.2	1647	236	141	12	M8x22	38
48	80	20	24	32	73.2	1756	221	132	12	M8x22	38
50	80	20	24	32	73.2	1830	212	132	12	M8x22	38
55	85	20	24	32	85.4	2348	225	145	14	M8x22	38
60	90	20	24	32	85.4	2560	206	137	14	M8x22	38
65	95	20	24	32	97.6	3170	217	148	16	M8x22	38
70	110	24	28	38	134.4	4700	231	147	14	M10x25	75
75	115	24	28	38	134.4	5000	216	140	14	M10x25	75
80	120	24	28	38	134.4	5300	202	134	14	M10x25	75
85	125	24	28	38	153.6	6500	218	148	16	M10x25	75
90	130	24	28	38	153.6	6900	205	141	16	M10x25	75
95	135	24	28	38	172.8	8200	219	154	18	M10x25	75
100	145	29	33	45	197.4	9870	219	151	14	M12x30	130
110	155	29	33	45	187.4	10800	200	141	14	M12x30	130
120	165	29	33	45	225.6	13500	209	152	16	M12x30	130
130	180	34	38	50	282	18300	184	132	20	M12x35	130
140	190	34	38	50	310.1	21700	188	138	22	M12x35	130
150	200	34	38	50	338.4	25300	220	165	24	M12x35	130
160	210	34	38	50	366.6	29300	195	148	26	M12x35	130
170	225	40	44	58	389	33000	174	131	22	M14x40	207
180	235	40	44	58	424	38000	179	137	24	M14x40	207
190	250	48	52	66	495	47000	164	124	28	M14x45	207
200	260	48	52	66	531	53000	167	128	30	M14x45	207