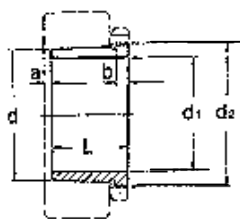
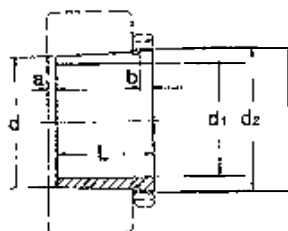


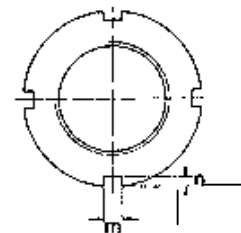
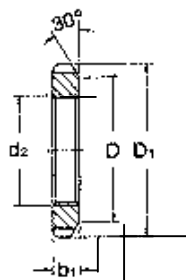
Series: AH31



AH22, AH32



Series : AN/KM



NO.	d	d ₁	L	b	a	d ₂	Weight (kg)
AHX 3120	100	95	64	11	4	M 110 x 2	0.650
AHX 3122	110	105	68	11	4	M 120 x 2	0.760
AHX 3124	120	115	75	12	4	M 130 x 2	0.950
AHX 3126	130	125	78	12	4	M 140 x 2	1.08
AHX 3128	140	135	83	14	5	M 150 x 2	1.28
AHX 3130	150	145	96	15	5	M 165 x 3	1.79
AH 3132	160	150	103	16	5	M 180 x 3	3.21
AH 3134	170	160	104	16	5	M 190 x 3	3.40
AH 3136	180	170	116	19	6	M 200 x 3	4.22
AH 3138	190	180	125	20	6	Tr 210 x 4	4.89
AH 3140	200	190	134	21	6	Tr 220 x 4	5.49
AH 3144	220	200	145	23	6	Tr 240 x 4	10.4
AH 3148	240	220	154	25	7	Tr 260 x 4	12.0
AH 3152	260	240	172	26	7	Tr 290 x 4	16.2
AH 3156	280	260	175	28	8	Tr 310 x 5	17.5
AH 3160	300	280	192	30	8	Tr 330 x 5	20.8
AH 3164	320	300	209	31	8	Tr 350 x 5	24.5
AH 3168	340	320	225	33	9	Tr 370 x 5	29.0
AH 3172	360	340	229	35	9	Tr 400 x 5	33.0
AH 3176	380	360	232	36	10	Tr 420 x 5	35.7
AH 3180	400	380	240	38	10	Tr 440 x 5	39.5
AH 3184	420	400	266	40	10	Tr 460 x 5	46.5
AHX 3188	440	420	270	42	11	Tr 480 x 5	49.8
AHX 3192	460	440	285	43	11	Tr 510 x 6	57.9
AHX 3196	480	460	295	45	12	Tr 530 x 6	63.1
AHX 3218	90	85	63	10	4	M 100 x 2	0.576
AHX 3219	95	90	67	11	4	M 105 x 2	0.655
AHX 3220	100	95	73	11	4	M 110 x 2	0.767
AHX 3222	110	105	82	11	4	M 125 x 2	1.04
AHX 3224	120	115	90	13	4	M 135 x 2	1.30
AHX 3226	130	125	98	15	4	M 145 x 2	1.58
AHX 3228	140	135	104	15	5	M 155 x 3	1.84
AHX 3230	150	145	114	17	5	M 165 x 3	2.22
AH 3232	160	150	124	20	6	M 180 x 3	4.08
AH 3234	170	160	134	24	6	M 190 x 3	4.80
AH 3236	180	170	140	25	6	M 200 x 3	5.32
AH 3238	190	180	145	25	7	Tr 210 x 4	5.90
AH 3240	200	190	153	24	7	Tr 220 x 4	6.68
AH 3260	300	280	228	34	8	Tr 330 x 5	26.0
AH 3264	320	300	246	36	8	Tr 350 x 5	30.6
AH 2236	180	170	105	17	5	M 200 x 3	3.73
AH 2238	190	180	112	18	5	Tr 210 x 4	4.25
AH 2240	200	190	118	19	5	Tr 220 x 4	4.68
AH 2244	220	200	130	20	6	Tr 240 x 4	9.10
AH 2248	240	220	144	21	6	Tr 260 x 4	11.1
AH 2252	260	240	155	23	6	Tr 290 x 4	14.0
AH 2256	280	260	155	24	8	Tr 310 x 5	15.2
AH 2260	300	280	170	26	8	Tr 330 x 5	18.1
AH 2264	320	300	180	27	10	Tr 350 x 5	20.2

NO.	d ₂	D ₁	b ₁	D	m	n	Weight (kg)
AN/KM 0	M 10 x 0.75	18	4	13.5	3	2	0.004
AN/KM 1	M 12 x 1	22	4	17	3	2	0.007
AN/KM 2	M 15 x 1	25	5	21	4	2	0.010
AN/KM 3	M 17 x 1	28	5	24	4	2	0.013
AN/KM 4	M 20 x 1	32	6	26	4	2	0.019
AN/KM 5	M 25 x 1.5	38	7	32	5	2	0.025
AN/KM 6	M 30 x 1.5	45	7	38	5	2	0.043
AN/KM 7	M 35 x 1.5	52	8	44	5	2	0.053
AN/KM 8	M 40 x 1.5	58	9	50	6	2.5	0.085
AN/KM 9	M 45 x 1.5	65	10	56	6	2.5	0.119
AN/KM 10	M 50 x 1.5	70	11	61	6	2.5	0.148
AN/KM 11	M 55 x 2	75	11	67	7	3	0.158
AN/KM 12	M 60 x 2	80	11	73	7	3	0.174
AN/KM 13	M 65 x 2	85	12	79	7	3	0.203
AN/KM 14	M 70 x 2	92	12	85	8	3.5	0.242
AN/KM 15	M 75 x 2	98	13	90	8	3.5	0.287
AN/KM 16	M 80 x 2	105	15	95	8	3.5	0.397
AN/KM 17	M 85 x 2	110	16	102	8	3.5	0.451
AN/KM 18	M 90 x 2	120	16	108	10	4	0.556
AN/KM 19	M 95 x 2	125	17	113	10	4	0.658
AN/KM 20	M 100 x 2	130	18	120	10	4	0.698
AN/KM 21	M 105 x 2	140	18	126	12	5	0.845
AN/KM 22	M 110 x 2	145	19	133	12	5	0.965
AN/KM 23	M 115 x 2	150	19	137	12	5	1.01
AN/KM 24	M 120 x 2	155	20	138	12	5	1.08
AN/KM 25	M 125 x 2	160	21	148	12	5	1.19
AN/KM 26	M 130 x 2	165	21	149	12	5	1.25
AN/KM 27	M 135 x 2	175	22	160	14	6	1.55
AN/KM 28	M 140 x 2	180	22	160	14	6	1.56
AN/KM 29	M 145 x 2	190	24	172	14	6	1.80
AN/KM 30	M 150 x 2	195	24	171	14	6	2.03
AN/KM 31	M 155 x 3	200	25	182	16	7	2.30
AN/KM 32	M 160 x 3	210	25	182	16	7	2.59
AN/KM 33	M 165 x 3	210	26	193	16	7	2.70
AN/KM 34	M 170 x 3	220	26	193	16	7	2.80
AN/KM 36	M 180 x 3	230	27	203	18	8	3.07
AN/KM 38	M 190 x 3	240	28	214	18	8	3.39
AN/KM 40	M 200 x 3	250	29	226	18	8	3.69
ANL/KML 24	M 120 x 2	145	20	135	12	5	0.780
ANL/KML 26	M 130 x 2	155	21	145	12	5	0.880
ANL/KML 28	M 140 x 2	165	22	155	12	5	0.990
ANL/KML 30	M 150 x 2	180	24	170	14	5	1.38
ANL/KML 32	M 160 x 3	190	25	180	14	5	1.56
ANL/KML 34	M 170 x 3	200	26	190	16	5	1.72
ANL/KML 36	M 180 x 3	210	27	200	16	5	1.95
ANL/KML 38	M 190 x 3	220	28	210	16	5	2.08
ANL/KML 40	M 200 x 3	240	29	222	18	8	2.98